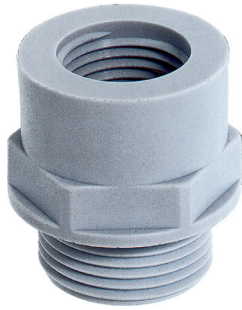


## SKINDICHT® EKU



### Benefits

- Enables the use of cable glands with larger connection threads than the existing threaded holes
- Assembling with wrench
- Bearing surface avoids scratchings on the housing while mounting with a wrench

### Application range

- Machines
- Devices
- Housings

### Approvals (Norm references)



### Design

- PG connection thread

### Technical data

<b>RAL</b>	<b>Colour delivered</b> RAL 7035 light grey
<b>Material</b>	Polyamide, glass fibre reinforced
<b>Range of temperature</b>	-40 °C up to +100 °C

Part number	Part designation / size Outer / inner	Pieces / PU
<b>SKINDICHT® EKU</b>		
52025200	EKU 7/9	100
51731000	EKU 9/11	100
51731010	EKU 11/13,5	100
51731020	EKU 13,5/16	100
51731030	EKU 16/21	50
51731040	EKU 21/29	25
52025210	EKU 29/36	25
52025220	EKU 36/42	25
52025230	EKU 42/48	25

## SKINDICHT® ME



### Benefits

- Enables the use of cable glands with larger connection threads than the existing threaded holes

### Application range

- Industrial connectors
- Devices
- Housings
- Machines

### Approvals (Norm references)



### Design

- PG connection thread

### Technical data

<b>Material</b>	Nickel-plated brass
-----------------	---------------------

Part number	Part designation / size Outer / inner	Pieces / PU
<b>SKINDICHT® ME</b>		
52003990	ME 7/9	100
52004000	ME 9/11	100
52004010	ME 9/13,5	100
52004020	ME 11/13,5	100
52004030	ME 11/16	100
52004040	ME 11/21	100
52004050	ME 13,5/16	100
52004060	ME 13,5/21	50
52004070	ME 16/21	50
52004080	ME 16/29	50
52004090	ME 21/29	50
52004100	ME 29/36	50
52004110	ME 36/42	10
52004120	ME 42/48	10